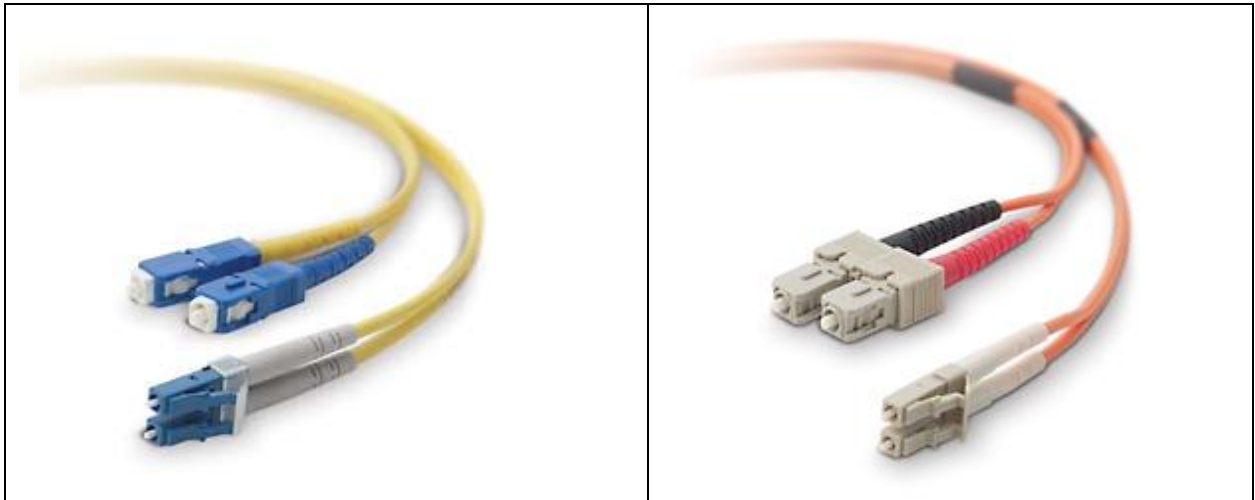


## SC/LC series

### Optical Patchcord Specifications – SC/LC Patchcord



#### Description

Topscom SC/LC fiber optic patchcords are used in a variety of test, telecommunication and data-communication applications. Topscom patchcords utilize UPC as standard connector end facepolish. Custom lengths and APC polish are available as per customer request.

#### Features

- ❖ RJ45 style housing with push-pull coupling mechanism which allows easy disengagement in dense spaces
- ❖ Small Form Factor – half the size of standard connectors
- ❖ Simplex and duplex assemblies available in standard and custom configurations
- ❖ Available in Singlemode or Multimode
- ❖ Ceramic zirconia ferrule
- ❖ UPC / APC finish
- ❖ User friendly audible latch to indicate proper mating
- ❖ Compliant with Telcordia GR-326-CORE specification

#### Application

- |   |                              |
|---|------------------------------|
| ❖ Gigabit Ethernet                      | ❖ Telecommunication networks |
| ❖ Video                                 | ❖ Premise installations      |
| ❖ CATV                                  | ❖ Multimedia                 |
| ❖ Test equipment                        | ❖ Industrial                 |
| ❖ Active device / Transceiver interface |                              |

## Optical Performance

---

Type	Singlemode (UPC)	Singlemode (APC)	Multimode (UPC)
Insertion loss	$\leq 0.3\text{dB}$	$\leq 0.3\text{dB}$	$\leq 0.3\text{dB}$
Return loss	$\geq 55\text{dB}$	$\geq 65\text{dB}$	$\geq 25\text{dB}$
Operating temperature	-40°C to +80°C		
Durability	Min 1000 cycles		